

2021 Education POLICY TRENDS

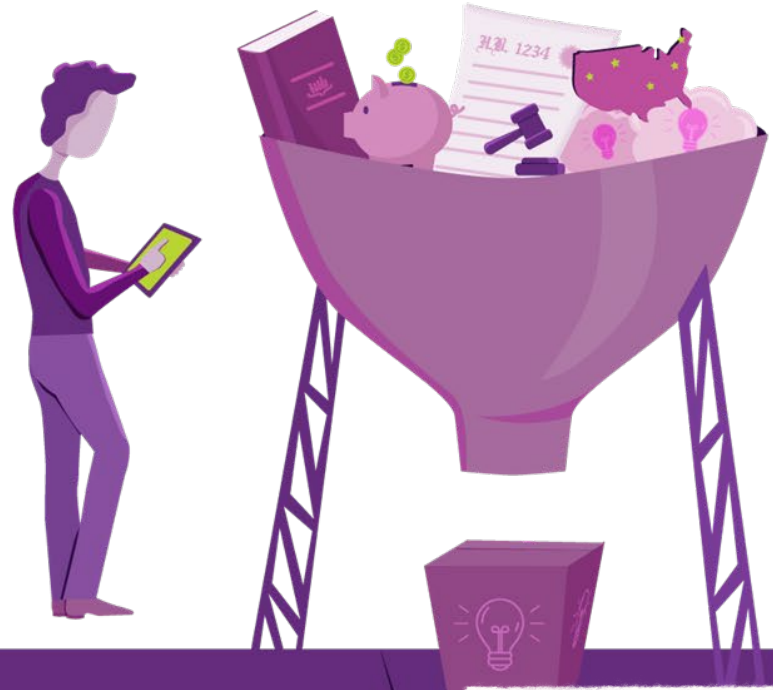


NAESP: National Leaders Conference
Feb. 23, 2021



Who we are.

The essential, indispensable member of any team addressing education policy.



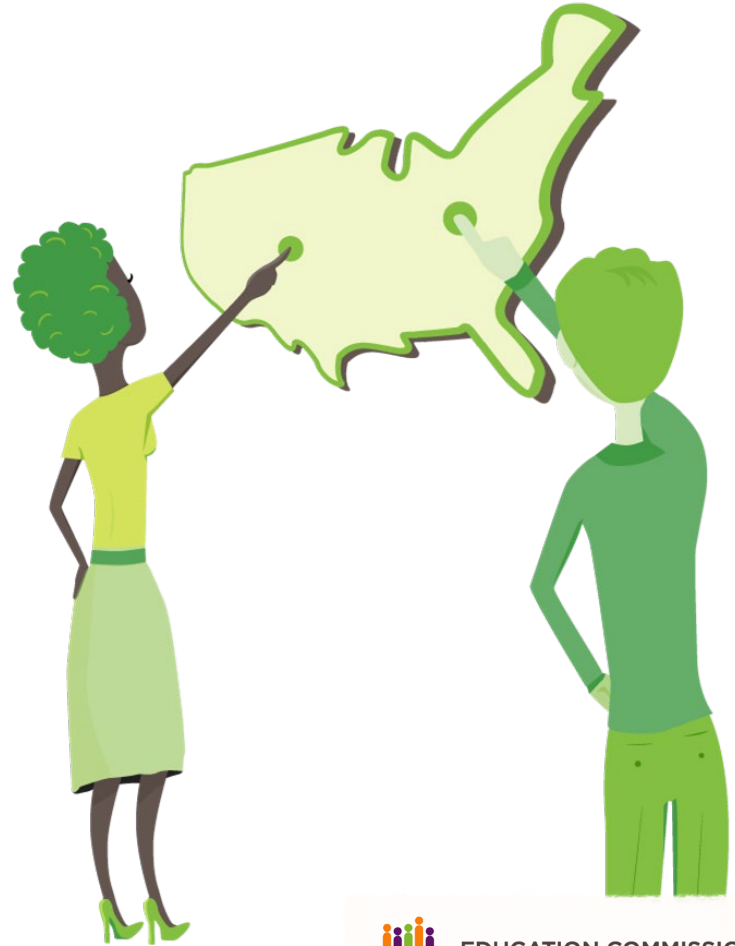
What we do.

We believe in the power of learning from experience and we know informed policymakers create better education policy.



How we do it.

We research, report,
convene and counsel.



NAESP Survey Results-December 2020

Overview

- 2021 Policy Trends
 - Teaching
 - K-12 funding
 - Student attendance
 - Digital divide
 - Learning loss
 - Student health and wellness
- K-3 Deep Dive
 - Kindergarten enrollment
 - Assessment & learning loss
 - Literacy
- Governors' State of the State Addresses
- Q &A

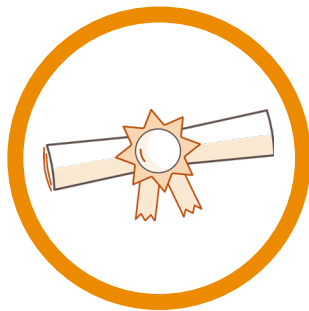
2021 Education POLICY TRENDS

Jeremy Anderson
President





2021 TRENDING TOPICS





Teaching

Teachers are the most important educational factor contributing to student success.



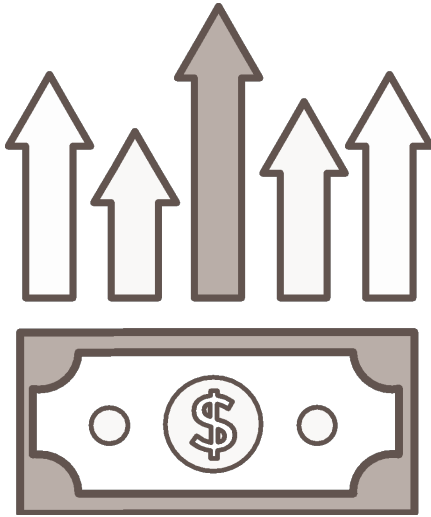
2021 Teaching Trends

Preparation
and Professional
Development

Teacher
Evaluations
(2020-21 School
Year)

Recruitment
and Retention





K-12 Funding

Additional funding for high-need student populations is linked to increased academic success.



2021 K-12 Funding Trends

Funding Equity
for
Disadvantaged
Student
Populations

Adjusting
Attendance-
Based Funding





Student Attendance

Due to the pandemic, attendance has decreased and become more difficult to track in remote environments.



2021 Attendance Trends

Decreases in
Attendance

Alterations to
Attendance
Tracking
Requirements

Changes to
Remote Learning
and Attendance
Requirements





Digital Divide

In 2018, 13.5 million students did not have access to the internet. This divide was exacerbated by the pandemic.



2021 Digital Divide Trends

Disproportionate
Impact on
Certain Groups

Governors Using
Federal Funds

Targeted,
Multi-Phase
Implementation





Learning Loss

Pandemic-prompted shifts to remote learning have led to concerns about student learning loss.



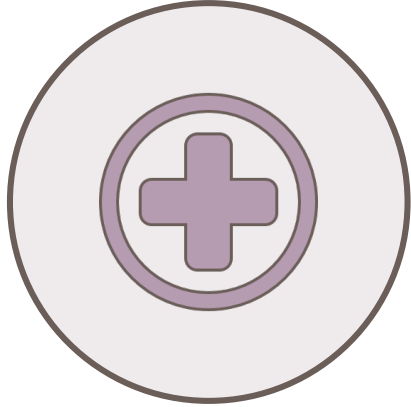
2021 Learning Loss Trends

Use of Federal
Funds

Disproportionate
Impact

Expanded
Learning Time
Proposals





Student Health and Wellness

Student health and wellness are tied to students' ability to attend school and consistently engage in their learning environments.



2021 Student Health Trends

Providing Health Services

Student Mental and Behavioral Health

Raising Awareness and Providing Support





Kindergarten – Third Grade

Early learning in the K-3 grades (and before) is important for building strong foundations.



2021 K-3 Trends

Kindergarten
Enrollment

Assessment and
Learning Loss

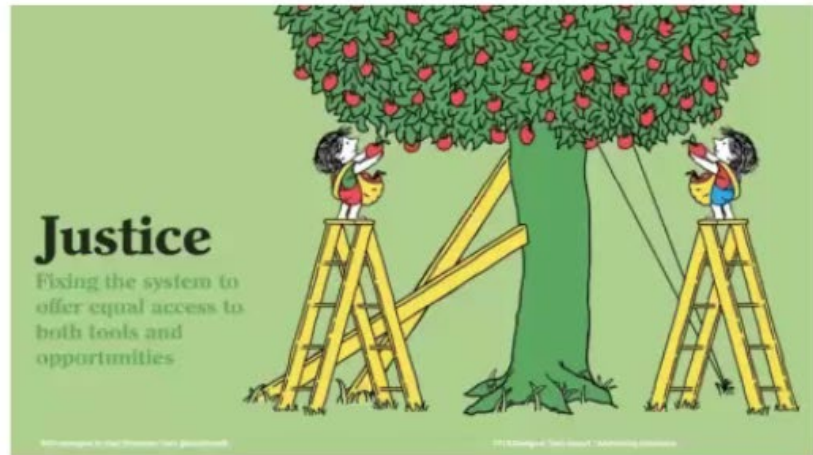
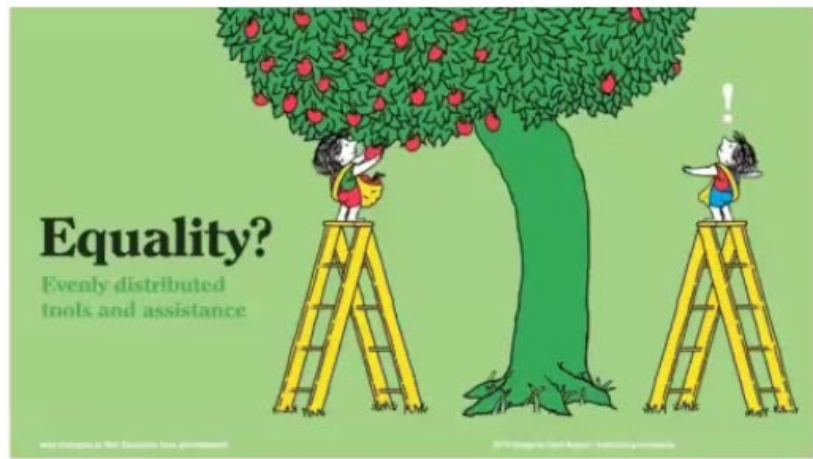
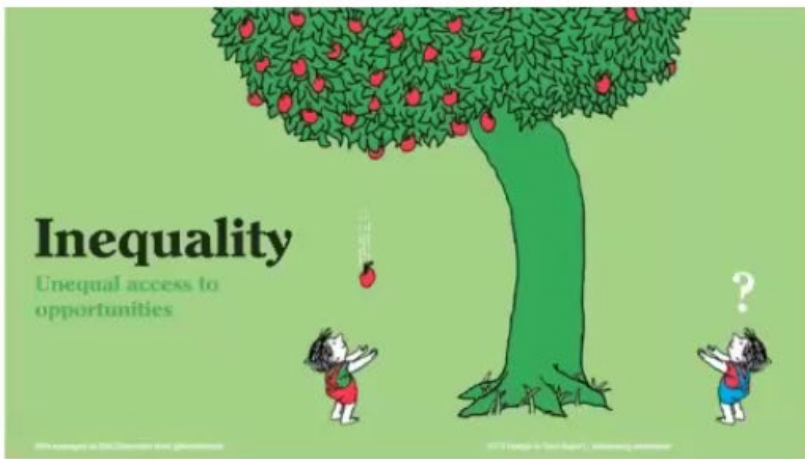
Literacy



Governors' State of the State Addresses

Top Education Policy Priorities ([link](#)):

- Finance
- Remote Learning
- Workforce Development
- In-Person Learning
- Learning Loss
- Health



Q&A





THANK YOU!

Jeremy Anderson
janderson@ecs.org

Deven Scott
dscott@ecs.org



ECS Resources

- COVID-19 Pandemic Responses ([link](#))
- State Education Policy Tracking ([link](#))
- Broadband Access and the Digital Divides ([link](#))
- Student Health and Wellness
 - Glossary of Student Mental Wellness Concepts ([link](#))
 - Glossary of School Health Professionals ([link](#))
- Kindergarten – Third Grade
 - 50-State Comparison: K-3 Policies ([link](#))
 - State Policies to Enhance Transitions into Kindergarten ([link](#))
 - Building a Better K-3 Literacy System ([link](#))